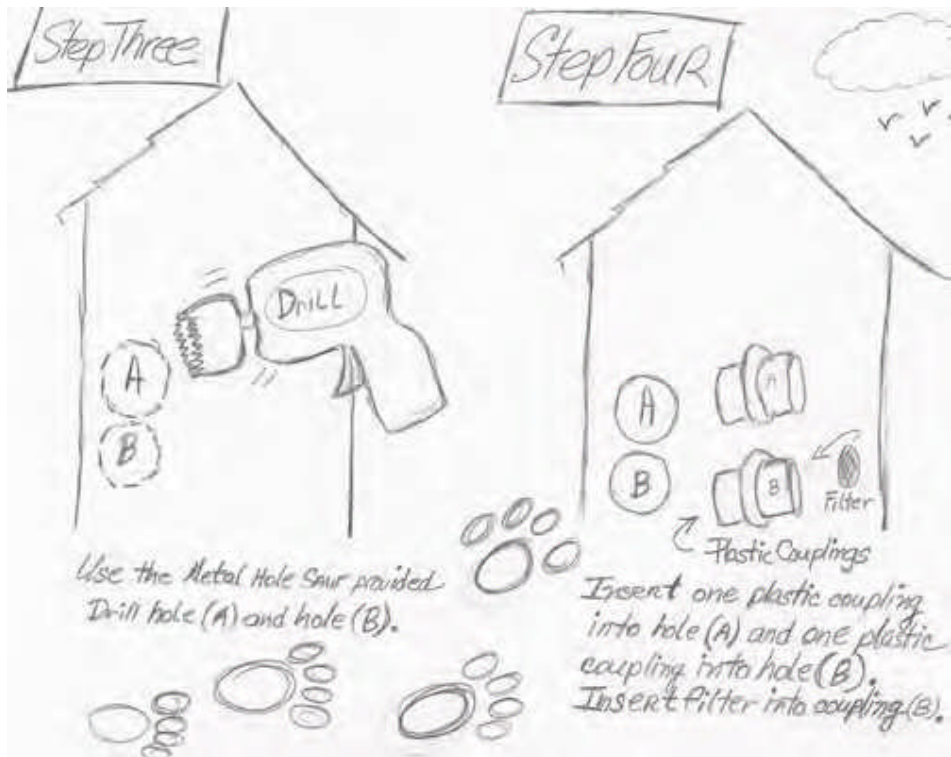
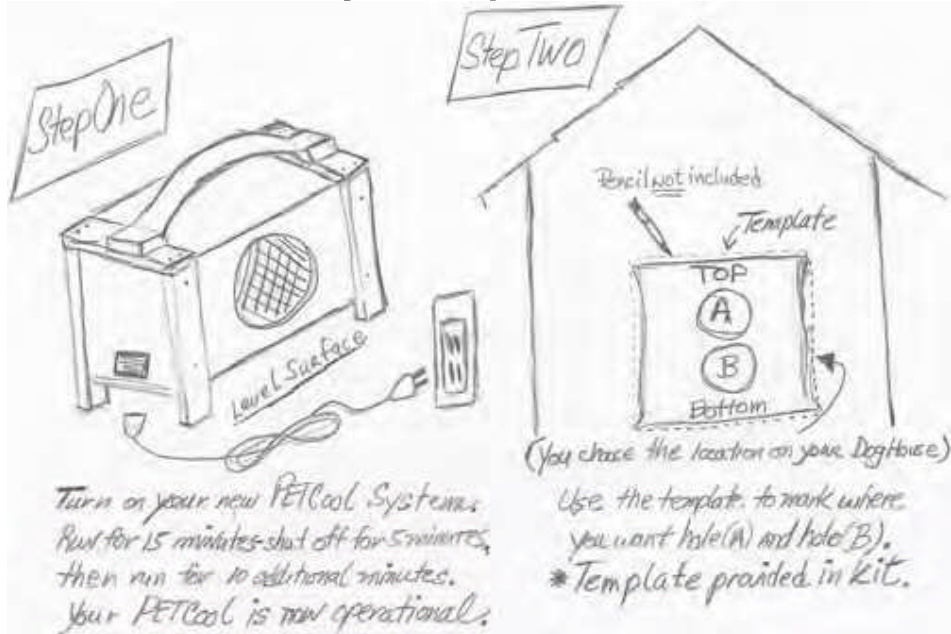


The Seven Easy Steps of Installation





Attach one hose to coupling in hole (A)
and one hose to coupling in hole (B).
Secure each hose with a pinch clamp.



Now connect the PetCool to your
pet's home by connecting one hose
to each coupling on the PetCool.
Secure each hose to its coupling
with a pinch clip.

Step Seven



Attach the plastic Doggie Door
to your pet's home.
Use the two Doggie Door screws provided.